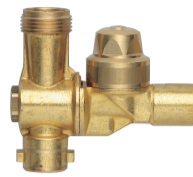
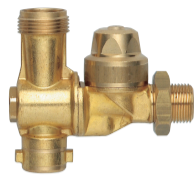
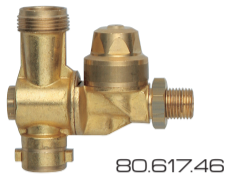


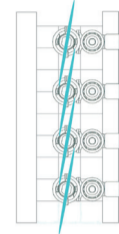
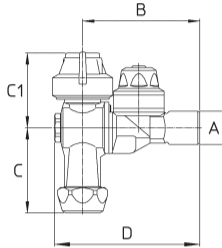
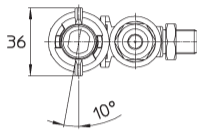
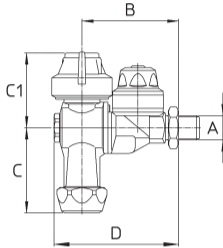


# M80

POSIZIONAMENTO E TENUTA SENZA COLLANTI  
ADJUST NOZZLE POSITION AND SEAL WITHOUT BONDING



**G1/4M.-1/4" BSPM**  
Dado con O Ring  
Nut with O Ring



◀ PAGE 10/47 ▶

**Standard senza ghiere, ugelli e filtri - 80.617.46 e 80.617.47 completi di dado**

Pressione di esercizio max.: 25 bar

Peso: G1/4M. 250 g - G3/8M. 250 g - G1/4F. 265 g

**Materiali:** ottone - acciaio inox - NBR - FPM - PVC

**Impiego:** su atomizzatori. Attacco a baionetta per il montaggio auto allineante (orientato 10°) delle ghiere per gli ugelli anti deriva AVI ALBUZ® e ID Lechler. Attacco filettato per il montaggio a scelta delle ghiere per gli ugelli ATR o Ø18 ALBUZ®. Sul lato con attacco a baionetta è possibile il montaggio dei filtri a cupola 256.508.13 e 256.508.14. Ugelli selezionabili con posizioni intermedie di chiusura. Due posizioni "APERTO" inclinate ±15° dalla verticale. Ogni posizione è segnalata da uno scatto. Antigoccia resistente ed efficace a bassa e ad alta pressione.

**Standard without caps, spray tips and strainers - 80.617.46 and 80.617.47 with nut**

Max. operating pressure: 25 bar (360 psi)

Weight: 1/4" BSPM. 250 g (8.8 oz) - 3/8" BSPM. 250 g (8.8 oz) - 1/4" BSPF. 265 g (9.4 oz)

**Materials:** brass - stainless steel - Buna N - FKM - PVC

**Use:** for agriculture use on air blast sprayers. Bayonet quick cap connection with automatic 10° orientation. Fits AVI ALBUZ® and ID Lechler anti drift spray tips. Threaded cap connection fits ATR and Ø18 ALBUZ® spray tips. The quick connection side fits cup strainers 256.508.13 and 256.508.14. Rollover to select spray tips with two shut off positions. Two "OPEN" positions at ±15° from vertical. A click point out each position. Check valve with efficient and long lasting operations at low and high pressures.

**COME SI ORDINA / HOW TO ORDER**

CODICE code	PER UGELLI for spray tips	A	B mm	C mm	C1 mm	D mm		KIT RICAMBIO spare parts kit
80.617.46	AVI/ID-ISO Ch8	G1/4M. - 1/4" BSPM.	51	45	39.5	67	10	75.302.28
80.617.47	Ø18	G3/8M. - 3/8" BSPM.	51	45	39.5	67	10	
80.617.48	ATR	G1/4F. - 1/4" BSPF.	62	45	39.5	78	10	

**RICAMBI  
SPARE PARTS :**

80.617.46  
80.617.47  
80.617.48



80.618.38  
Nero / Black



80.618.39  
Oro / Gold



75.605.46  
75.605.47

**COME SI ORDINA / HOW TO ORDER**

GHIERA + GUARNIZIONE cap + gasket	SOLO GHIERA cap only	SOLO GUARNIZIONE gasket only	PER UGELLI for spray tips	
80.618.38 (Nero/Black)	80.605.88	300.601.31 EPDM	ID-ISO Ch8 Lechler	10
80.618.39 (Oro/Gold)	80.605.89	300.601.31 EPDM	AVI	10
	75.605.46	-	ATR	10
	75.605.47	-	Ø18	10



GETTI  
NOZZLES



UGELLI  
SPRAY TIPS



COMPONENTI  
PARTS



CATALOGHI  
CATALOGUES