



# M82 - M72

POSIZIONAMENTO E TENUTA SENZA COLLANTI  
ADJUST NOZZLE POSITION AND SEAL WITHOUT BONDING



82.617.18  
82.617.68 FPM / FKM



82.617.19



72.610.7



72.610.8



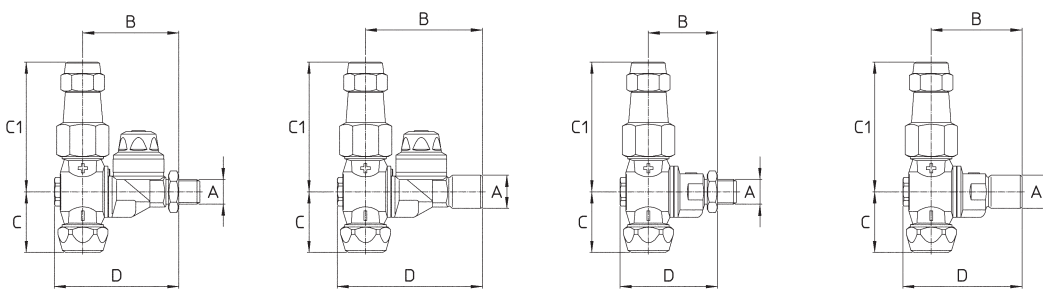
72.610.9



G1/4M.-1/4\"/>



Kit ghiera AD/AC  
AD/AC cap kit



**Standard: lato regolabile con ghiera Ch20 G3/8F. e ugello AMT Ø15**  
**Lato fisso con ghiera M75 Ø15 75.605.46 o kit ghiera AD / AC per ugelli Kit Ø15, ATR / TVI e AD/AC ALBUZ®**  
**Versioni con attacco G1/4M.: dado G1/4F. con O Ring NBR**  
**Versioni con attacco G3/8M. - G1/8F.: dado G3/8F.**  
**Versioni 82.617.68 G1/4M. con tenute in FPM**  
**Versione 82.617.18 SU G1/4M. senza ugello nel lato regolabile**

Pressione di esercizio max.: 40 bar  
 Peso: M82: G1/4M. 340 g - G3/8M. 355 g - G1/4F. 340 g  
 M72: G1/4M. 275 g - G3/8M. 290 g - G1/4F. 275 g

**Materiali:** ottone - acciaio inox - NBR - PVC - FPM  
**Impiego:** su atomizzatori. Il lato regolabile consente il trattamento di colture ad alto fusto. Due ugelli selezionabili con posizioni intermedie di chiusura. Compatibile con ugelli AMT Ø15, ATR / TVI, AD/AC ALBUZ®. Due posizioni di spruzzo inclinate di 20°. Posizioni segnalate da uno scatto. M82 con antigoccia resistente ed efficace in un ampio range di pressioni. Versioni G1/4M. fornite con dado e O Ring per il montaggio orientato del getto sui collettori senza utilizzare collanti.

**Standard: adjustable side supplied with 3/8\"/>**

Max. operating pressure: 40 bar (580 psi)  
 Weight: M82: G1/4M. 340 g (12 oz) - G3/8M. 355 g (12.5 oz) - G1/4F. 340 g (12 oz)  
 M72: G1/4M. 275 g (9.5 oz) - G3/8M. 290 g (10 oz) - G1/4F. 275 g (9.5 oz)

**Materials:** brass - stainless steel - Buna N - PVC - FKM  
**Use:** for agriculture use on air blast sprayers. The adjustable side allows spray pattern variation for high trees coverage. Rollover to select spray tips with two shut off positions. Improved spray tip configuration: fits Ø15 AMT, ATR / TVI and AD / AC ALBUZ® spray tips. Two "OPEN" positions at ±20° from vertical. A click point out each position. M82 models fitted with check valve with efficient and long lasting operations in a wide range of pressures. 1/4" BSPM. boom connection models supplied with nut and O Ring to adjust nozzle position on booms without bonding.

## M82 - COME SI ORDINA / HOW TO ORDER

CODICE code	GHIERA LATO FISSO fixed side cap	FORO UGELLO spray tip hole mm		PER UGELLI for spray tips		A	B mm	C mm	C1 mm	D mm	KIT RICAMBIO spare parts kit						
		REGOLABILE adjustable	FISSO fixed	REGOLABILE adjustable	FISSO fixed												
82.617.18	Ø15	Ø15	Ø15 kit ATR/TVI	G1/4M. 1/4" BSPM.	51	32	68	66	10	75.302.28							
82.617.18 10	Ø15	Ø1.0	Ø15 kit ATR/TVI														
82.617.18 12	Ø15	Ø1.2	Ø15 kit ATR/TVI														
82.617.18 18	Ø15	Ø1.8	Ø15 kit ATR/TVI														
82.617.18 20	Ø15	Ø2.0	Ø15 kit ATR/TVI														
82.617.18 D	AD/AC	Ø1.5	AD/AC														
82.617.18 DA	AD/AC	Ø1.0	AD/AC														
82.617.18 DB	AD/AC	Ø1.2	AD/AC														
82.617.18 DC	AD/AC	Ø1.8	AD/AC														
82.617.18 DD	AD/AC	Ø2.0	AD/AC														
82.617.18 SU	Ø15	-	Ø15 kit ATR/TVI														
82.617.68	Ø15	Ø15	Ø15 kit ATR/TVI								G1/4M. 1/4" BSPM.	51	32	68	66	-	90.302.59
82.617.68 10	Ø15	Ø1.0	Ø15 kit ATR/TVI														
82.617.68 12	Ø15	Ø1.2	Ø15 kit ATR/TVI														
82.617.68 18	Ø15	Ø1.8	Ø15 kit ATR/TVI														
82.617.68 20	Ø15	Ø2.0	Ø15 kit ATR/TVI														
82.617.68 D	AD/AC	Ø1.5	AD/AC														
82.617.68 DA	AD/AC	Ø1.0	AD/AC														
82.617.68 DB	AD/AC	Ø1.2	AD/AC														
82.617.68 DC	AD/AC	Ø1.8	AD/AC														
82.617.68 DD	AD/AC	Ø2.0	AD/AC														
82.617.5	Ø15	Ø15	Ø15 kit ATR/TVI	G3/8M.-G1/8F. 3/8" BSPM.-1/8" BSPF.	51	32	68	66	-	90.302.59							
82.617.5 10	Ø15	Ø1.0	Ø15 kit ATR/TVI														
82.617.5 12	Ø15	Ø1.2	Ø15 kit ATR/TVI														
82.617.5 18	Ø15	Ø1.8	Ø15 kit ATR/TVI														
82.617.5 20	Ø15	Ø2.0	Ø15 kit ATR/TVI														
82.617.5 D	AD/AC	Ø1.5	AD/AC														
82.617.5 DA	AD/AC	Ø1.0	AD/AC														
82.617.5 DB	AD/AC	Ø1.2	AD/AC														
82.617.5 DC	AD/AC	Ø1.8	AD/AC														
82.617.5 DD	AD/AC	Ø2.0	AD/AC														
82.617.19	Ø15	Ø15	Ø15 kit ATR/TVI								G3/8M.-G1/8F. 3/8" BSPM.-1/8" BSPF.	51	32	68	66	10	75.302.28
82.617.19 10	Ø15	Ø1.0	Ø15 kit ATR/TVI														
82.617.19 12	Ø15	Ø1.2	Ø15 kit ATR/TVI														
82.617.19 18	Ø15	Ø1.8	Ø15 kit ATR/TVI														
82.617.19 20	Ø15	Ø2.0	Ø15 kit ATR/TVI														
82.617.19 D	AD/AC	Ø1.5	AD/AC														
82.617.19 DA	AD/AC	Ø1.0	AD/AC														
82.617.19 DB	AD/AC	Ø1.2	AD/AC														
82.617.19 DC	AD/AC	Ø1.8	AD/AC														
82.617.19 DD	AD/AC	Ø2.0	AD/AC														
82.617.20	Ø15	Ø15	Ø15 kit ATR/TVI	G1/4F. 1/4" BSPF.	62	32	68	77	10	75.302.28							
82.617.20 10	Ø15	Ø1.0	Ø15 kit ATR/TVI														
82.617.20 12	Ø15	Ø1.2	Ø15 kit ATR/TVI														
82.617.20 18	Ø15	Ø1.8	Ø15 kit ATR/TVI														
82.617.20 20	Ø15	Ø2.0	Ø15 kit ATR/TVI														
82.617.20 D	AD/AC	Ø1.5	AD/AC														
82.617.20 DA	AD/AC	Ø1.0	AD/AC														
82.617.20 DB	AD/AC	Ø1.2	AD/AC														
82.617.20 DC	AD/AC	Ø1.8	AD/AC														
82.617.20 DD	AD/AC	Ø2.0	AD/AC														

## M72 - COME SI ORDINA / HOW TO ORDER

CODICE code	GHIERA LATO FISSO fixed side cap	FORO UGELLO spray tip hole mm		PER UGELLI for spray tips		A	B mm	C mm	C1 mm	D mm	KIT RICAMBIO spare parts kit
		REGOLABILE adjustable	FISSO fixed	REGOLABILE adjustable	FISSO fixed						
72.610.7	Ø15	Ø15	Ø15 kit ATR/TVI	G1/4M. 1/4" BSPM.	37	32	68	52	10	70.302.27	
72.610.7 10		Ø1.0									
72.610.7 12		Ø1.2									
72.610.7 18		Ø1.8									
72.610.7 20		Ø2.0									
72.610.8	Ø15	Ø15	Ø15 kit ATR/TVI	G3/8M.-G1/8F. 3/8" BSPM.-1/8" BSPF.	37	32	68	52	10	70.302.27	
72.610.8 10		Ø1.0									
72.610.8 12		Ø1.2									
72.610.8 18		Ø1.8									
72.610.8 20		Ø2.0									
72.610.9	Ø15	Ø15	Ø15 kit ATR/TVI	G1/4F. 1/4" BSPF.	48	32	68	63	10	70.302.27	
72.610.9 10		Ø1.0									
72.610.9 12		Ø1.2									
72.610.9 18		Ø1.8									
72.610.9 20		Ø2.0									



72.610.7  
72.610.8  
72.610.9

82.617.5  
82.617.18  
82.617.18SU

82.617.19  
82.617.20  
82.617.68